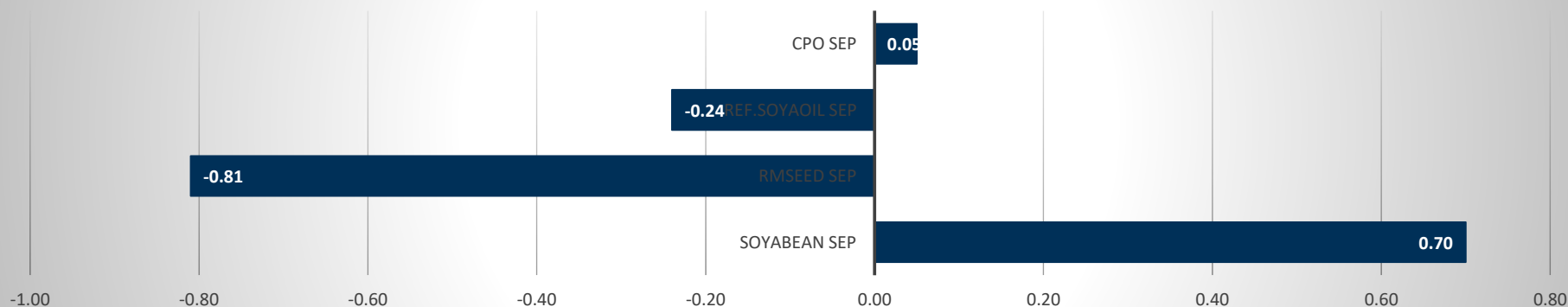


Commodity	Open	High	Low	Close	Rs.Chg	% Chg	Spot	Vol	OI	OI Chg	OI STATUS
Soyabean Sep	7600.00	7986.00	7600.00	7755.00	54.00	0.70	8896.00	4550	18945	0.34	Fresh Buying
Rmseed Sep	8000.00	8071.00	7915.00	7994.00	-65.00	-0.81	8020.25	21770	24990	-2.84	Long Liquidation
Ref.Soyaoil Sep	1401.00	1414.90	1397.00	1404.20	-3.40	-0.24	1419.30	14650	25970	-9.67	Long Liquidation
Cpo Sep	1143.00	1147.00	1138.00	1143.10	0.60	0.05	1204.00	819	3995	-1.16	Short Covering

Commodity	Daily Levels								Trend	Performance			
	Close	Res - 3	Res - 2	Res - 1	Pivot	Sup - 1	Sup - 2	Sup - 3		1 Week	1 Month	3 Month	1 Year
Soyabean Sep	7755.00	8346.0	8166.0	7960.0	7780.0	7574.0	7394.0	7188.0	Positive	-5.13	-23.19	11.37	49.14
Rmseed Sep	7994.00	8227.0	8149.0	8071.0	7993.0	7915.0	7837.0	7759.0	Negative	0.05	4.72	12.46	34.68
Ref.Soyaoil Sep	1404.20	1431.0	1423.0	1413.0	1405.0	1395.0	1387.0	1377.0	Negative	0.55	0.99	2.75	37.05
Cpo Sep	1143.10	1156.4	1151.7	1147.4	1142.7	1138.4	1133.7	1129.4	Positive	-2.94	-2.50	-3.02	33.59

Price Movement



DAILY SOYABEAN SYNOPSIS

Expiry	Open	High	Low	Close	Rs.Chg	% Chg	Spot	Vol	OI	OI % Chg	Fut-Spot	OI STATUS
20 SEP 2021	7600.00	7986.00	7600.00	7755.00	54.00	0.70	8896.00	4550	18945	0.34	-1141.00	Fresh Buying
20 OCT 2021	6100.00	6303.00	6100.00	6205.00	-17.00	-0.27	8896.00	4375	17570	2.90	-2691.00	Fresh Selling
18 NOV 2021	6038.00	6085.00	5935.00	6010.00	-7.00	-0.12	8896.00	990	8745	2.04	-2886.00	Fresh Selling

- Soyabean trading range for the day is 7394-8166.
- Soyabean gained on short covering and as in Marathwada, there were concerns about mosaic virus, as well as infestation of pink and American bollworm.
- In recent sessions prices trading with weakness since last week after Brazil said that they will be reducing there mandatory bio-diesel blend to 10% from 12%.
- USDA reported daily export sales 133,000 tonnes of soybeans to China and 132,150 tonnes of soybeans to unknown destinations, all for delivery in the 2021/22 marketing year.
- At the Indore spot market in top producer MP, soybean dropped -194 Rupees to 8896 Rupees per 100 kgs.

CHART



TECHNICALS

Simple Moving Average

5 Days	10 Days	20 Days	50 Days	100 Days	200 Days
8198	7955	8581	8024	7545	6155
SELL	SELL	SELL	SELL	BUY	BUY

Exponential Moving Average

5 Days	10 Days	20 Days	50 Days	100 Days	200 Days
7979	8105	8251	8045	7457	6538
SELL	SELL	SELL	SELL	BUY	BUY

Spread

Month	Rate	SEP	OCT	NOV
SEP	7755		-1550	-1745
OCT	6205			-195
NOV	6010			

DAILY RMSEED SYNOPSIS

Expiry	Open	High	Low	Close	Rs.Chg	% Chg	Spot	Vol	OI	OI % Chg	Fut-Spot	OI STATUS
20 SEP 2021	8000.00	8071.00	7915.00	7994.00	-65.00	-0.81	8020.25	21770	24990	-2.84	-26.25	Long Liquidation
20 OCT 2021	8080.00	8125.00	7975.00	8048.00	-60.00	-0.74	8020.25	8770	24890	2.43	27.75	Fresh Selling
18 NOV 2021	8142.00	8164.00	8034.00	8128.00	-24.00	-0.29	8020.25	1000	8260	-2.71	107.75	Long Liquidation

- Rmseed trading range for the day is 7837-8149.
- Mustard seed dropped amid weakness in overseas prices after reports that the U.S. EPA will recommend lowering biofuel blending mandates.
- In recent session, prices seen supported as USDA estimates Canada rapeseed production down as drought in the Prairies intensifies.
- EU weekly rapeseed imports jumped by 70% to 127k mt, total at 414k mt
- In Alwar spot market in Rajasthan the prices dropped -28.5 Rupees to end at 8020.25 Rupees per 100 kg.

CHART



TECHNICALS

Simple Moving Average

5 Days	10 Days	20 Days	50 Days	100 Days	200 Days
8106	8002	7859	7417	7176	6460
SELL	SELL	BUY	BUY	BUY	BUY

Exponential Moving Average

5 Days	10 Days	20 Days	50 Days	100 Days	200 Days
8045	7989	7855	7531	7146	6595
SELL	BUY	BUY	BUY	BUY	BUY

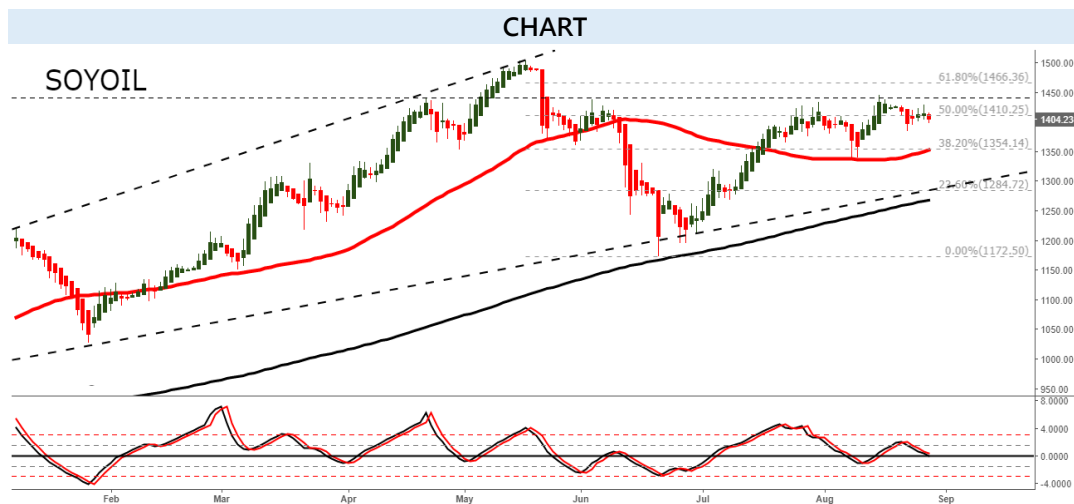
Spread

Month	Rate	SEP	OCT	NOV
SEP	7994		54	134
OCT	8048			80
NOV	8128			

DAILY SOYOIL SYNOPSIS

Expiry	Open	High	Low	Close	Rs.Chg	% Chg	Spot	Vol	OI	OI % Chg	Fut-Spot	OI STATUS
20 SEP 2021	1401.00	1414.90	1397.00	1404.20	-3.40	-0.24	1419.30	14650	25970	-9.67	-15.10	Long Liquidation
20 OCT 2021	1384.00	1394.00	1379.20	1386.30	-3.90	-0.28	1419.30	6255	6415	-10.90	-33.00	Long Liquidation
18 NOV 2021	1370.00	1378.00	1365.00	1369.10	-17.80	-1.28	1419.30	155	110	4.76	-50.20	Fresh Selling

- Ref.Soya oil trading range for the day is 1387-1423.
- Ref soyoil dropped amid profit booking tracking weakness in soyabean prices and other oilseed counters
- The Government has reduced the import duty of Soyadegum oil to 7.50 percent from 15 percent earlier.
- Edible oil prices are likely to remain elevated till the arrival of new crop in the October-November period, industry officials said.
- At the Indore spot market in Madhya Pradesh, soyoil was steady at 1419.3 Rupees per 10 kgs.



TECHNICALS						
Simple Moving Average						
5 Days	10 Days	20 Days	50 Days	100 Days	200 Days	
1409.7	1407.1	1396.3	1349.4	1366.3	1261.8	
SELL	SELL	BUY	BUY	BUY	BUY	
Exponential Moving Average						
5 Days	10 Days	20 Days	50 Days	100 Days	200 Days	
1407.5	1404.7	1396.2	1372.5	1339.0	1255.1	
SELL	SELL	BUY	BUY	BUY	BUY	
Spread						
Month	Rate	SEP	OCT	NOV		
SEP	1404.2		-17.9	-35.1		
OCT	1386.3			-17.2		
NOV	1369.1					

DAILY CRUDE PALM OIL SYNOPSIS

Expiry	Open	High	Low	Close	Rs.Chg	% Chg	Spot	Vol	OI	OI % Chg	Fut-Spot	OI STATUS
30 SEP 2021	1143.00	1147.00	1138.00	1143.10	0.60	0.05	1204.00	819	3995	-1.16	-60.90	Short Covering
29 OCT 2021	1132.20	1132.20	1121.60	1128.70	0.00	0.00	1204.00	192	477	20.45	-75.30	Fresh Selling
30 NOV 2021	1124.90	1124.90	1124.90	1124.90	9.90	0.89	1204.00	1	2	100.00	-79.10	Fresh Buying

- CPO trading range for the day is 1133.7-1151.7.
- Crude palm oil settled flat on slow export shipments and industry estimates of an increase in August output.
- Indonesia Sept crude palm oil export reference price, export tax set higher
- Slow palm oil output growth to lift Malaysia's 2021 average prices to 3,600 rgt/T – MPOB
- In spot market, Crude palm oil remains unchanged at by 0 Rupees to end at 1204 Rupees.

CHART



TECHNICALS

Simple Moving Average

5 Days	10 Days	20 Days	50 Days	100 Days	200 Days
1193.2	1185.5	1163.2	1109.8	1139.7	1072.0
BUY	BUY	BUY	BUY	BUY	BUY

Exponential Moving Average

5 Days	10 Days	20 Days	50 Days	100 Days	200 Days
1193.9	1185.1	1168.5	1139.6	1117.8	1056.3
BUY	BUY	BUY	BUY	BUY	BUY

Spread

Month	Rate	SEP	OCT	NOV
SEP	1143.1		-14.4	-18.2
OCT	1128.7			-3.8
NOV	1124.9			

SOYABEAN PRICE MOVEMENT SINCE 2012

Year						Sowing	Growth	Harvesting					Crop Calendar
	JAN	FEB	MAR	APR	MAY	JUN	JUL	AUG	SEP	OCT	NOV	DEC	
2012	2451.50	2668.50	3085.50	3625.00	3404.00	3968.50	4370.50	3947.50	3201.50	3298.00	3209.50	3203.00	689.00
	-2.49	8.85	15.63	17.49	-6.10	16.58	10.13	-9.68	-18.90	3.01	-2.68	-0.20	27.41
2013	3287.50	3324.50	3641.00	3932.00	3810.00	3670.50	2973.00	3470.00	3531.00	3925.00	3860.00	3819.00	616.00
	2.64	1.13	9.52	7.99	-3.10	-3.66	-19.00	16.72	1.76	11.16	-1.66	-1.06	19.23
2014	3926.50	4165.00	4311.50	4777.50	4592.00	4094.00	3639.00	3358.00	2963.00	3289.00	3300.00	3366.00	-453.00
	2.81	6.07	3.52	10.81	-3.88	-10.84	-11.11	-7.72	-11.76	11.00	0.33	2.00	-11.86
2015	3434.00	3406.00	3458.00	4025.00	3890.00	3329.00	3160.00	3218.00	3429.00	3909.00	3907.00	3880.00	514.00
	2.02	-0.82	1.53	16.40	-3.35	-14.42	-5.08	1.84	6.56	14.00	-0.05	-0.69	15.27
2016	3726.00	3664.00	4010.00	3927.00	3835.00	3740.00	3557.00	3257.00	3235.00	3114.00	3116.00	3029.00	-851.00
	-3.97	-1.66	9.44	-2.07	-2.34	-2.48	-4.89	-8.43	-0.68	-3.74	0.06	-2.79	-21.93
2017	3092.00	3007.00	2941.00	3002.00	2762.00	2925.00	3154.00	3097.00	3033.00	2823.00	3098.00	3118.00	89.00
	2.08	-2.75	-2.19	2.07	-7.99	5.90	7.83	-1.81	-2.07	-6.92	9.74	0.65	2.94
2018	3685.00	3802.00	3756.00	3669.00	3549.00	3566.00	3392.00	3222.00	3233.00	3269.00	3354.00	3399.00	281.00
	18.18	3.18	-1.21	-2.32	-3.27	0.48	-4.88	-5.01	0.34	1.11	2.60	1.34	9.01
2019	3826.00	3637.00	3681.00	3676.00	3718.00	3671.00	3582.00	3825.00	3939.00	3863.00	4072.00	4436.00	1037.00
	12.56	-4.94	1.21	-0.14	1.14	-1.26	-2.42	6.78	2.98	-1.93	5.41	8.94	30.51
2020	4084.00	3708.00	3796.00	3810.00	3830.00	3714.00	3780.00	4116.00	3866.00	4263.00	4415.00	4606.00	170.00
	-7.94	-9.21	2.37	0.37	0.52	-3.03	1.78	8.89	-6.07	10.27	3.57	4.33	3.83
2021	4644.00	5078.00	5993.00	7107.00	6873.00	7181.00	10081.00						5475.00
	0.83	9.35	18.02	18.59	-3.29	4.48	40.38						118.87
Average	1.48	0.61	4.39	6.05	-2.92	-1.32	2.24	-0.14	-3.80	4.69	1.94	2.82	Average

RMSEED PRICE MOVEMENT SINCE 2012

Year	Growth		Harvesting										Sowing			Crop Calendar
	JAN	FEB	MAR	APR	MAY	JUN	JUL	AUG	SEP	OCT	NOV	DEC				
2012	3346.00 1.06	3632.00 8.55	3925.00 8.07	4130.00 5.22	3901.00 -5.54	3990.00 2.28	4397.00 10.20	4452.00 1.25	3927.00 -11.79	4269.00 8.71	4214.00 -1.29	3544.00 -15.90	233.00 7.04			
2013	3492.00 -1.47	3428.00 -1.83	3479.00 1.49	3505.00 0.75	3514.00 0.26	3451.00 -1.79	3182.00 -7.79	3571.00 12.23	3641.00 1.96	3878.00 6.51	3811.00 -1.73	3469.00 -8.97	-75.00 -2.12			
2014	3353.00 -3.34	3537.00 5.49	3504.00 -0.93	3594.00 2.57	3456.00 -3.84	3595.00 4.02	3641.00 1.28	3592.00 -1.35	3693.00 2.81	3763.00 1.90	3885.00 3.24	3524.00 -9.29	55.00 1.59			
2015	3378.00 -4.14	3406.00 0.83	3411.00 0.15	3869.00 13.43	4306.00 11.29	4255.00 -1.18	4232.00 -0.54	4317.00 2.01	4514.00 4.56	4923.00 9.06	4897.00 -0.53	4244.00 -13.33	720.00 20.43			
2016	3877.00 -8.65	3929.00 1.34	4202.00 6.95	4472.00 6.43	4503.00 0.69	4848.00 7.66	4875.00 0.56	4681.00 -3.98	4642.00 -0.83	4498.00 -3.10	4876.00 8.40	3974.00 -18.50	604.00 14.23			
2017	3834.00 -3.52	3848.00 0.37	3908.00 1.56	3759.00 -3.81	3483.00 -7.34	3609.00 3.62	3699.00 2.49	3771.00 1.95	3739.00 -0.85	3897.00 4.23	4104.00 5.31	3939.00 -4.02	-35.00 -0.88			
2018	4187.00 6.30	4125.00 -1.48	4054.00 -1.72	3795.00 -6.39	3958.00 4.30	4027.00 1.74	4214.00 4.64	4070.00 -3.42	4241.00 4.20	4170.00 -1.67	3977.00 -4.63	3929.00 -1.21	-10.00 -0.25			
2019	3983.00 1.37	3840.00 -3.59	3750.00 -2.34	3744.00 -0.16	3718.00 -0.69	3939.00 5.94	3950.00 0.28	3922.00 -0.71	3954.00 0.82	4306.00 8.90	4321.00 0.35	4658.00 7.80	729.00 18.55			
2020	4109.00 -11.79	4000.00 -2.65	4118.00 2.95	4141.00 0.56	4490.00 8.43	4650.00 3.56	5014.00 7.83	5410.00 7.90	5468.00 1.07	6067.00 10.95	5871.00 -3.23	5817.00 -0.92	1159.00 24.88			
2021	5604.00 -3.66	5536.00 -1.21	5682.00 2.64	6871.00 20.93	6998.00 1.85	6924.00 -1.06	7713.00 11.40						1896.00 32.59			
Average	-2.47	0.32	1.13	3.81	1.30	2.12	3.12	1.52	-0.27	5.41	0.88	-6.07	Average			

SOYOIL PRICE MOVEMENT SINCE 2012

	JAN	FEB	MAR	APR	MAY	JUN	JUL	AUG	SEP	OCT	NOV	DEC	Growth
2012	683.15	712.75	751.40	775.70	735.65	761.50	784.85	792.20	663.20	686.70	720.25	695.80	-37.70
	-6.86	4.33	5.42	3.23	-5.16	3.51	3.07	0.94	-16.28	3.54	4.89	-3.39	-5.52
2013	737.35	680.85	688.10	719.30	715.05	673.00	651.95	703.20	686.20	748.85	713.80	698.10	2.30
	5.97	-7.66	1.06	4.53	-0.59	-5.88	-3.13	7.86	-2.42	9.13	-4.68	-2.20	0.31
2014	683.55	716.65	705.45	718.50	676.60	693.45	676.60	610.65	614.00	599.85	576.80	638.05	-60.05
	-2.08	4.84	-1.56	1.85	-5.83	2.49	-2.43	-9.75	0.55	-2.30	-3.84	10.62	-8.79
2015	620.10	595.40	583.60	582.50	613.00	588.15	574.70	574.15	598.05	611.30	619.65	614.50	-23.55
	-2.81	-3.98	-1.98	-0.19	5.24	-4.05	-2.29	-0.10	4.16	2.22	1.37	-0.83	-3.80
2016	610.10	617.40	642.50	657.60	656.95	644.10	631.30	645.95	661.45	674.30	727.65	706.95	92.45
	-0.72	1.20	4.07	2.35	-0.10	-1.96	-1.99	2.32	2.40	1.94	7.91	-2.84	15.15
2017	686.10	664.35	623.10	610.85	622.80	641.90	657.35	664.05	664.70	686.10	746.45	727.50	20.55
	-2.95	-3.17	-6.21	-1.97	1.96	3.07	2.41	1.02	0.10	3.22	8.80	-2.54	3.00
2018	743.85	760.85	786.85	764.75	776.40	756.20	742.30	739.75	748.30	754.85	719.95	730.10	2.60
	2.25	2.29	3.42	-2.81	1.52	-2.60	-1.84	-0.34	1.16	0.88	-4.62	1.41	0.35
2019	775.80	756.85	728.75	740.05	755.30	745.10	733.90	755.05	764.50	773.65	814.40	933.20	203.10
	6.26	-2.44	-3.71	1.55	2.06	-1.35	-1.50	2.88	1.25	1.20	5.27	14.59	26.18
2020	851.20	767.60	828.00	787.20	785.20	799.10	864.70	892.90	904.10	963.40	1072.30	1190.10	256.90
	-8.79	-9.82	7.87	-4.93	-0.25	1.77	8.21	3.26	1.25	6.56	11.30	10.99	30.18
2021	1105.50	1192.40	1269.50	1360.70	1365.60	1222.60	1409.50						219.40
	-7.11	7.86	6.47	7.18	0.36	-10.47	15.29						19.85
Average	-1.16	-1.01	0.93	1.39	0.43	-1.77	1.83	0.79	-1.49	2.70	2.90	4.14	Average

CPO PRICE MOVEMENT SINCE 2012

	JAN	FEB	MAR	APR	MAY	JUN	JUL	AUG	SEP	OCT	NOV	DEC	Growth
2012	514.20	536.20	592.30	621.50	585.90	566.40	564.40	551.60	446.20	425.20	423.20	417.90	-127.50
	-5.72	4.28	10.46	4.93	-5.73	-3.33	-0.35	-2.27	-19.11	-4.71	-0.47	-1.25	-23.38
2013	438.20	450.80	454.90	464.90	480.50	502.20	496.60	568.70	532.40	557.20	558.30	540.20	122.30
	4.86	2.88	0.91	2.20	3.36	4.52	-1.12	14.52	-6.38	4.66	0.20	-3.24	29.27
2014	524.00	590.00	569.70	567.70	524.90	535.00	539.10	439.60	474.50	457.20	439.50	460.60	-79.60
	-3.00	12.60	-3.44	-0.35	-7.54	1.92	0.77	-18.46	7.94	-3.65	-3.87	4.80	-14.74
2015	425.00	466.10	434.40	435.40	456.80	451.40	417.60	360.50	425.70	400.80	382.40	411.00	-49.60
	-7.73	9.67	-6.80	0.23	4.92	-1.18	-7.49	-13.67	18.09	-5.85	-4.59	7.48	-10.77
2016	432.50	481.90	532.20	564.00	537.00	506.80	524.70	559.10	581.60	514.90	554.70	582.70	171.70
	5.23	11.42	10.44	5.98	-4.79	-5.62	3.53	6.56	4.02	-11.47	7.73	5.05	41.78
2017	587.50	544.90	538.80	516.80	512.70	490.80	488.70	518.20	547.80	545.30	589.60	554.60	-28.10
	0.82	-7.25	-1.12	-4.08	-0.79	-4.27	-0.43	6.04	5.71	-0.46	8.12	-5.94	-4.82
2018	560.60	587.50	651.80	642.60	653.10	643.40	616.80	599.50	594.00	593.50	500.70	511.60	-43.00
	1.08	4.80	10.94	-1.41	1.63	-1.49	-4.13	-2.80	-0.92	-0.08	-15.64	2.18	-7.75
2019	569.40	550.10	525.90	529.70	519.30	515.80	513.60	522.20	546.60	587.90	680.00	795.20	283.60
	11.30	-3.39	-4.40	0.72	-1.96	-0.67	-0.43	1.67	4.67	7.56	15.67	16.94	55.43
2020	771.80	689.00	679.50	632.10	658.20	700.50	740.10	763.60	772.50	830.90	872.00	972.20	177.00
	-2.94	-10.73	-1.38	-6.98	4.13	6.43	5.65	3.18	1.17	7.56	4.95	11.49	22.26
2021	946.00	1076.50	1132.00	1218.60	1177.60	1042.90	1144.90						172.70
	-2.69	13.79	5.16	7.65	-3.36	-11.44	9.78						17.76
Average	0.35	3.14	1.40	0.99	-0.67	-2.35	0.70	-0.47	1.33	-0.75	1.91	4.47	Average

GENERAL DISCLAIMERS

KEDIA ADVISORY

This Report is prepared and distributed by Kedia Stocks & Commodities Research Pvt Ltd. for information purposes only. The recommendations, if any, made herein are expression of views and/or opinions and should not be deemed or construed to be neither advice for the purpose of purchase or sale through KSCRPL nor any solicitation or offering of any investment /trading opportunity. These information / opinions / views are not meant to serve as a professional investment guide for the readers. No action is solicited based upon the information provided herein. Recipients of this Report should rely on information/data arising out of their own investigations. Readers are advised to seek independent professional advice and arrive at an informed trading/investment decision before executing any trades or making any investments. This Report has been prepared on the basis of publicly available information, internally developed data and other sources believed by KSCRPL to be reliable. KSCRPL or its directors, employees, affiliates or representatives do not assume any responsibility for, or warrant the accuracy, completeness, adequacy and reliability of such information / opinions / views. While due care has been taken to ensure that the disclosures and opinions given are fair and reasonable, none of the directors, employees, affiliates or representatives of KSCRPL shall be liable for any direct, indirect, special, incidental, consequential, punitive or exemplary damages, including lost profits arising in any way whatsoever from the information / opinions / views contained in this Report. The possession, circulation and/or distribution of this Report may be restricted or regulated in certain jurisdictions by appropriate laws. No action has been or will be taken by KSCRPL in any jurisdiction (other than India), where any action for such purpose(s) is required. Accordingly, this Report shall not be possessed, circulated and/ or distributed in any such country or jurisdiction unless such action is in compliance with all applicable laws and regulations of such country or jurisdiction. KSCRPL requires such recipient to inform himself about and to observe any restrictions at his own expense, without any liability to KSCRPL. Any dispute arising out of this Report shall be subject to the exclusive jurisdiction of the Courts in India.

For more details, please **contact**:

 +91 9323406035 / 9619551022

 info@kediaadvisory.com

 www.kediaadvisory.com

KEDIA STOCKS & COMMODITIES RESEARCH PVT LTD.
Mumbai, IN.

SEBI REGISTRATION NUMBER - INH000006156

